



**PRESS RELEASE
For Immediate Release**

**6 November 2002
INTERNATIONAL**

**STAR CRUISES WINS SAFETY AND ENVIRONMENT AWARD
AT THE LLOYD'S LIST-SMM 2002 AWARDS IN HAMBURG, GERMANY**

Star Cruises, "The First Global Cruise Line" and "The Leading Cruise Line in Asia-Pacific" is pleased to announce that it has won an award for its Nautical Learning Event Report ("NLER") under the Safety and Environment category at the recent Lloyd's List-SMM 2002 Awards held in Hamburg, Germany.

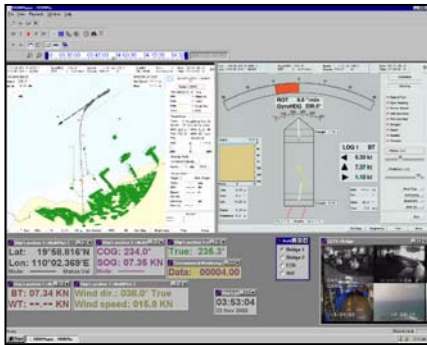
"We are delighted with this award which serves as a shining testimony to Star Cruises' commitment and goal to be the safest cruise line in the world. Safety is paramount at Star Cruises and this award is a great encouragement to all of us," said Mr. Nils Nordh, Star Cruises Executive Vice President of Marine Operations and Newbuilding who accepted the award on behalf of Star Cruises.

The Nautical Learning Event Report ("NLER") developed by Star Cruises is a result of adopting a human factors-based Reason safety management model (based on the model by James Reason) that is on par with the most advanced systems used by airlines. This model relies on a proactive approach to safety and establishing a safety culture that is based on an informed organisation.

In developing the NLER, Star Cruises has used new technologies principally Voyage Data Recorder ("VDR") delivered by Consilium Navigation AB to elevate the level of sophistication and established a process to ensure that incidents recorded onboard by the VDR are thoroughly analysed by the Bridge Teams of the fleet. The objective of the NLER process is to ensure that correct lessons are learned from an incident and objective changes made to operational procedures if necessary.

"The capability to record, retrieve and analyse real incidents and recreating incidents in Star Cruises Ship Simulator located at Port Klang, enables the Bridge Teams to fine tune their skills and learn both from errors and positive examples where difficult situations have been handled skillfully," said Capt. Gustaf Gronberg, Star Cruises Vice President of Nautical and Fleet Captain.

"The use of scenarios of actual incidents is a watershed in simulator training and raises the effectiveness and impact of this training to a new level. To further enhance realism, the Star Cruises Ship Simulator has a feature that enables synchronisation and correlation of the VDR output with the visual database of the port in which the incident took place," added Capt. Gustaf.



Incident Analysis by VDR recording



Incident conformed to simulator exercise



The Lloyd's List-SMM 2002 Awards

MORE ON THE STAR CRUISES SHIP SIMULATOR

The Star Cruises Ship Simulator is located within the Star Cruises Terminal, Port Klang complex. Completed in 1998 at a cost of US\$5 million, the simulator is the only one of its kind in the world owned by a shipping company.

The simulator is able to simulate the environments of the various ports of call and climactic conditions. Combining audio and video effects, the simulator provides virtual-realistic scenarios of actual port scenes in Port Klang, Straits of Malacca, Langkawi, Kuantan, Kemaman, Singapore, Hong Kong, Xiamen, Phuket, Keelung, Saigon River and Ishigaki and many more.

The training centre also conducts training programmes for officers from other shipping companies and has to date hosted pilots and officers from AP Moller, Singapore, MISC (Malaysia International Shipping Corporation Berhad), NSSPL (Neptune Ship Management Services Pte Ltd), Singapore, Hyundai, Korea and UNOCAL Thailand Ltd. Pilots from Xiamen (China), Saigon (Vietnam), Laem Chabang (Thailand), Hong Kong and Sydney, Brisbane, Freemantle and Melbourne (Australia) have also trained at the simulator.

ABOUT STAR CRUISES

Star Cruises is the fourth largest cruise line in the world presently operating a combined fleet of 19 ships with over 24,000 lower berths, with cruises to destinations and islands in Asia-Pacific, North and South America, Hawaii, Caribbean, Alaska, Europe, Mediterranean, Bermuda and Antarctica under the Star Cruises, Norwegian Cruise Line, Orient Lines and Cruise Ferries brands. By end 2002, with the delivery of Norwegian Dawn, Star Cruises will have over 26,000 lower berths. Star Cruises is represented in more than 20 locations worldwide with offices in Australia, New Zealand, China, Germany, Hong Kong, India, Indonesia, Japan, Korea, Malaysia, Norway, Philippines, Singapore, Sweden, Switzerland, Taiwan, Thailand, United Kingdom and the United States of America. For more information on Star Cruises and NCL, please visit www.starcruises.com and www.ncl.com

For editorial, please contact:

MALAYSIA

Jane Poh
Vice President
Corporate Communications
Tel : 603-3109 2526
Fax : 603-3101 1479
Email : sjpoh@starcruises.com.my

Raymond Hew
Assistant Manager
Corporate Communications
Tel : 603-3109 2623
Fax : 603-3101 1479
Email : wyhew@starcruises.com.my